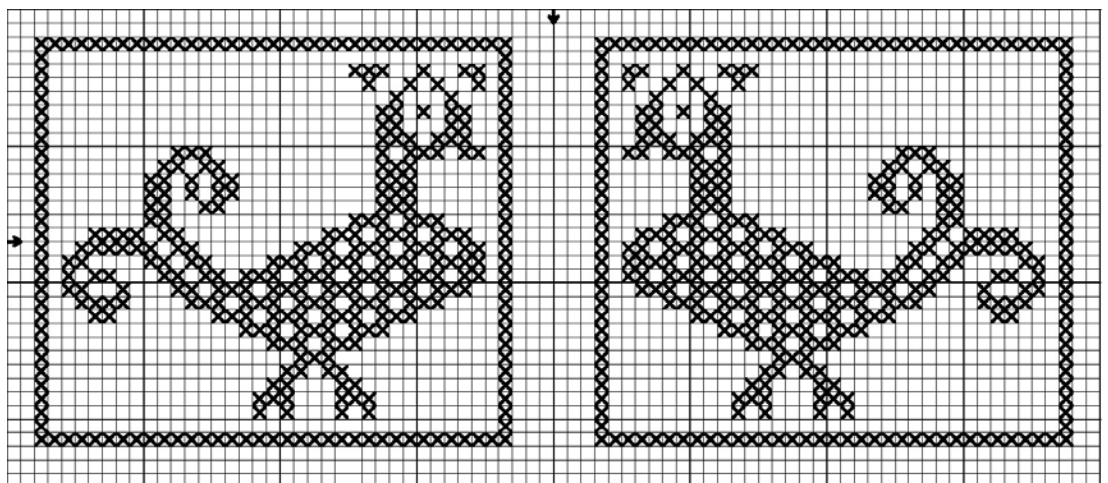


## Mexican Scissors Fob

I have charted this with the bird facing both ways, as I put the bird on each side of the fob, but wanted him facing the same direction, as if you were seeing two sides of the same bird.

I used one strand of DMC 666 for the fob, stitched over two threads on 32-count linen. To finish, using the holes from the cross-stitches around the border, either whip stitch or use the ladder stitch to stitch the piece together from the front sides using the same thread so it all looks neat. Before you close up the last side, stuff with whatever you'd like, then close up the last side. Use the rest of the floss to make a twisted cord and tassel. I added the tassel to the twisted cord, and then ran the cord through the center of the fob as I was stitching the two sides together.



*In the Company of Friends™*  
www.inthecompanyoffriends.com  
206-524-0066  
inthecompanyoffriends@gmail.com

*Partners*  
*Julie Buck*  
*Becky deVries-Wong*